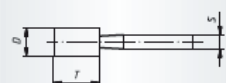




Shape ZY, Cylinder, Type 1 (according to DIN 69170)

Ordering example: A200002013602



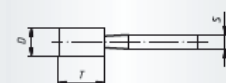
Packing unit: 20 pcs. per type. Further dimensions, qualities and shank lengths on request.

Table with columns: Description, Quality, D mm, T mm, S mm, Product-Number, recommended for. Contains 40 rows of product specifications.



Shape ZY, Cylinder, Type 1 (according to DIN 69170)

Ordering example: A200003232627W



Packing unit: 20 pcs. per type. Further dimensions, qualities and shank lengths on request.

Table with columns: Description, Quality, D mm, T mm, S mm, Product-Number, recommended for. Contains 40 rows of product specifications.